



**WIBEMO**

CLAMPING SYSTEMS  
MECHANICAL COMPONENTS

 SWISS MADE

# CLAMPING SYSTEMS

## ▶ WIBEMO MANUFACTURING

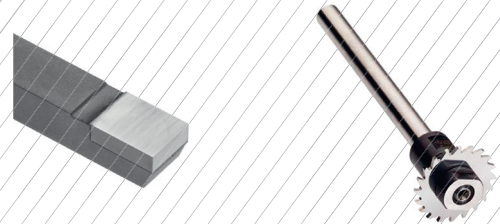
### COLLETS AND SLEEVES



### CUSTOMIZED CARBIDE GUIDE BUSHES



### OTHER MANUFACTURING



### PATENTED MOWIDEC-TT™ CENTERING SYSTEM



## ▶ WIBEMO ADDED VALUE - MANUFACTURING



TECHNICAL ASSISTANCE



LARGE STOCK OF BLANKS



SHORT LEAD TIMES



SINGLE PIECE AND SMALL SERIES

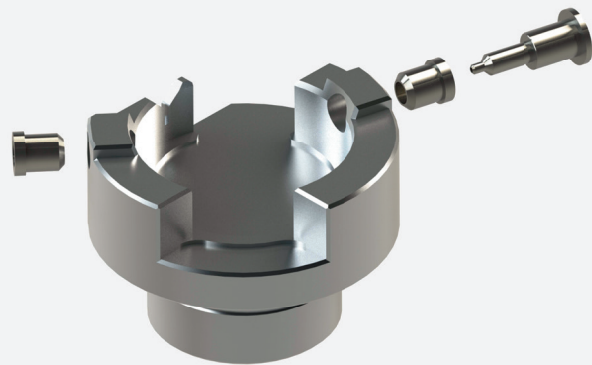
# MECHANICAL COMPONENTS

► HIGH PRECISION MACHINING AND ASSEMBLY



## MASTERY OF 20 DIFFERENT PROFESSIONS

- | DESIGN - DESIGN SUPPORT
- | TURNING - MILLING
- | HEAT TREATMENT (QUENCHING AND TEMPERING)
- | BRAZING
- | SANDBLASTING - MICROBLASTING - POLISHING - DEBURRING
- | EDM
- | GRINDING - HARD TURNING - HONING - LAPPING  
PRECISION GRINDING
- | WASHING
- | LASER MARKING
- | ASSEMBLY
- | METROLOGICAL INSPECTIONS



► WIBEMO ADDS VALUE - MACHINING AND ASSEMBLY



MULTIDISCIPLINARY TEAMS



CONTINUOUS TRAINING



RENEWAL OF MACHINE PARK

## ► CUSTOMIZED PRECISION MECHANICS

### DIMENSIONS (IN MM)

- | CYLINDRICAL MACHINING – Ø 250 x 500
- | CUBIC MACHINING – 100 x 100 x 100

### MATERIALS

- | BRASS – ALUMINIUM – BRONZE – COPPER
- | STEEL – HARDENED STEEL – STAINLESS STEEL  
COBALT-BASED ALLOYS – HARD METALS
- | POM, PEEK, PMMA POLYMERS – POLYURETHANE: PUR65

### ACCURACY (IN MM)

- | IT3 OR GEOMETRY WITH AN ACCURACY OF +/- 0.0015  
– LAPPING
- | IT4 OR GEOMETRY WITH AN ACCURACY OF +/- 0.0025  
– MILLING  
– EDM  
– HARD TURNING  
– GRINDING
- | IT5 OR GEOMETRY WITH AN ACCURACY OF +/- 0.0025  
– TURNING
- | IT6 OR GEOMETRY WITH AN ACCURACY OF +/- 0.0025  
– ASSEMBLY
- | N2 (RA 0.05) OR GEOMETRY WITH AN ACCURACY OF +/- 0.0010  
– HONING  
– POLISHING
- | +/- 2 HRC  
– HEATH TREATMENT

### BATCHES

- | SINGLE PIECE
- | SMALL SERIES (< 200)
- | MEDIUM SERIES (< 10,000)



## ► WIBEMO ADDED VALUE – PRECISION MECHANICS



SHORT LEAD TIMES



LEAN MANUFACTURING



CONTINUOUS EMPROVEMENT

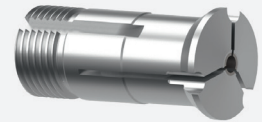
# CLAMPING SYSTEMS

▶ DISTRIBUTION OF SWISS MADE PRODUCTS FOR MACHINE TOOLS

## COLLETS AND SLEEVES



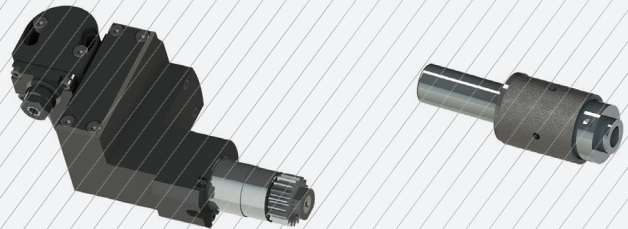
## CARBIDE GUIDE BUSHES



## BAR LOADER ACCESSORIES



## LIVE TOOL HOLDERS & BROACHING



## TOOL HOLDERS & COLLET CHUCKS



## ▶ PARTNERS

**RBC** **SCHAUBLIN**

**serge meister**  
SA  
PRECISION CARBIDE TOOLS

**REGO-FIX**

**PCM**  
be driven.

**IN PART**

SWISS QUALITY MADE  
**tecnopin** **z**

## ▶ WIBEMO ADDED VALUE - DISTRIBUTION



LARGE STOCK OF PARTS



TECHNICAL ASSISTANCE



SHORT LEAD TIMES



GLOBAL PURCHASING CENTER



**WIBEMO**

Rue Montchemin 12  
2832 Rebeuvelier  
SWITZERLAND  
T + 41 32 436 10 50  
info@wibemo.ch  
www.wibemo.ch

 **SWISS MADE**